

Commonwealth of Pennsylvania
Josh Shapiro, Governor



Lower Merion Historical Society
“Preserving Our Past for the Future”

info@lowermerionhistory.org
lowermerionhistory.org

Image credits: Legacy Center Archives & Special Collections at Drexel University College of Medicine, Bryn Mawr College Libraries Special Collections, Mueller Atlas of Properties on the Main Line Pennsylvania Railroad 1908 & 1920

Pennsylvania Historical and Museum Commission

“WOMEN OF IDENLEA ESTATE” HISTORICAL MARKER DEDICATION

Honoring a family of trailblazing women:



Dr. Hannah E. Myers Longshore
Abolitionist, first woman physician in PA



Dr. Jane Viola Myers
Abolitionist, early woman physician, suffragist



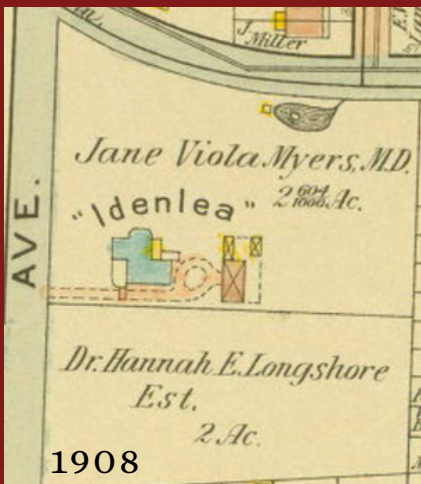
**Mrs. Lucretia Mott Longshore
Blankenburg**
*Activist for rights of women and children,
suffragist, First Lady of Philadelphia*

Sunday September 15, 2024 @ 2pm
18 N Highland Ave
Bala Cynwyd PA 19004

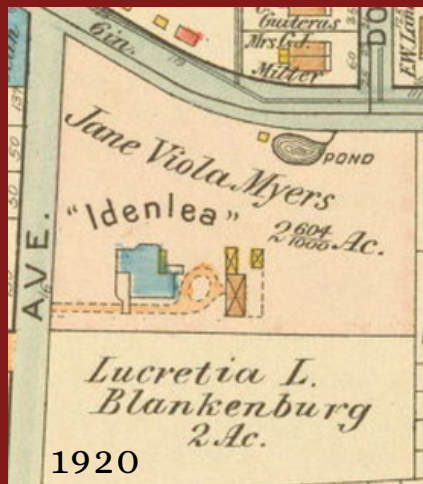


Women of Idenlea Estate

“A family of trailblazing women lived here. Abolitionist Dr. Hannah E. Longshore (1819–1901) graduated in the first class of the Female Medical College of Pa. in 1851 and served on its faculty before opening her practice in Philadelphia alongside her sister Dr. Jane V. Myers (1831–1918). Hannah’s daughter, Lucretia Blankenberg (1845–1937), was a prominent suffragist who with her husband, Philadelphia Mayor Rudolph Blankenberg, worked for civic reform.”



1908



1920

SPEAKERS

ERIN BETLEY

Vice President, Lower Merion Historical Society

SENATOR AMANDA CAPPELLETTI

17th Senatorial District, Montgomery and Delaware Counties

JENNIFER ROBINSON

Preservation Board, Pennsylvania Historical and Museum Commission

LOUIS ROSSMAN, D.M.D.

Commissioner, Lower Merion Township

DR. STEVEN PEITZMAN

Medical Historian, Drexel University College of Medicine

CYNTHIA LITTLE, Ph.D.

Historian

ISHANA BABOO & MARCIA MANZONE

Bryn Mawr College '25 & Bryn Mawr College '17/
Temple University School of Medicine '25

Reading a statement by Dr. Elsa-Grace Giardina, Bryn Mawr College '61, Professor Emeritus of Medicine, Columbia University Medical Center

Erin Betley will make closing remarks prior to the marker unveiling at 2:30, followed by a light reception